



2023 ANNUAL REPORT

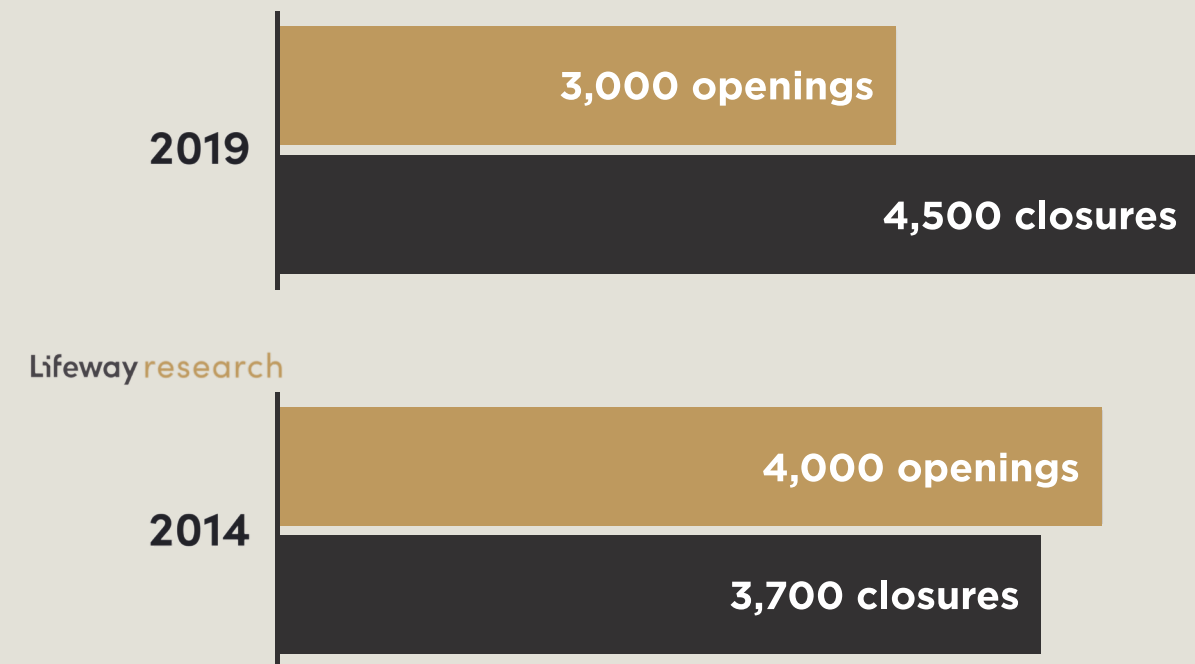
Churches planting churches



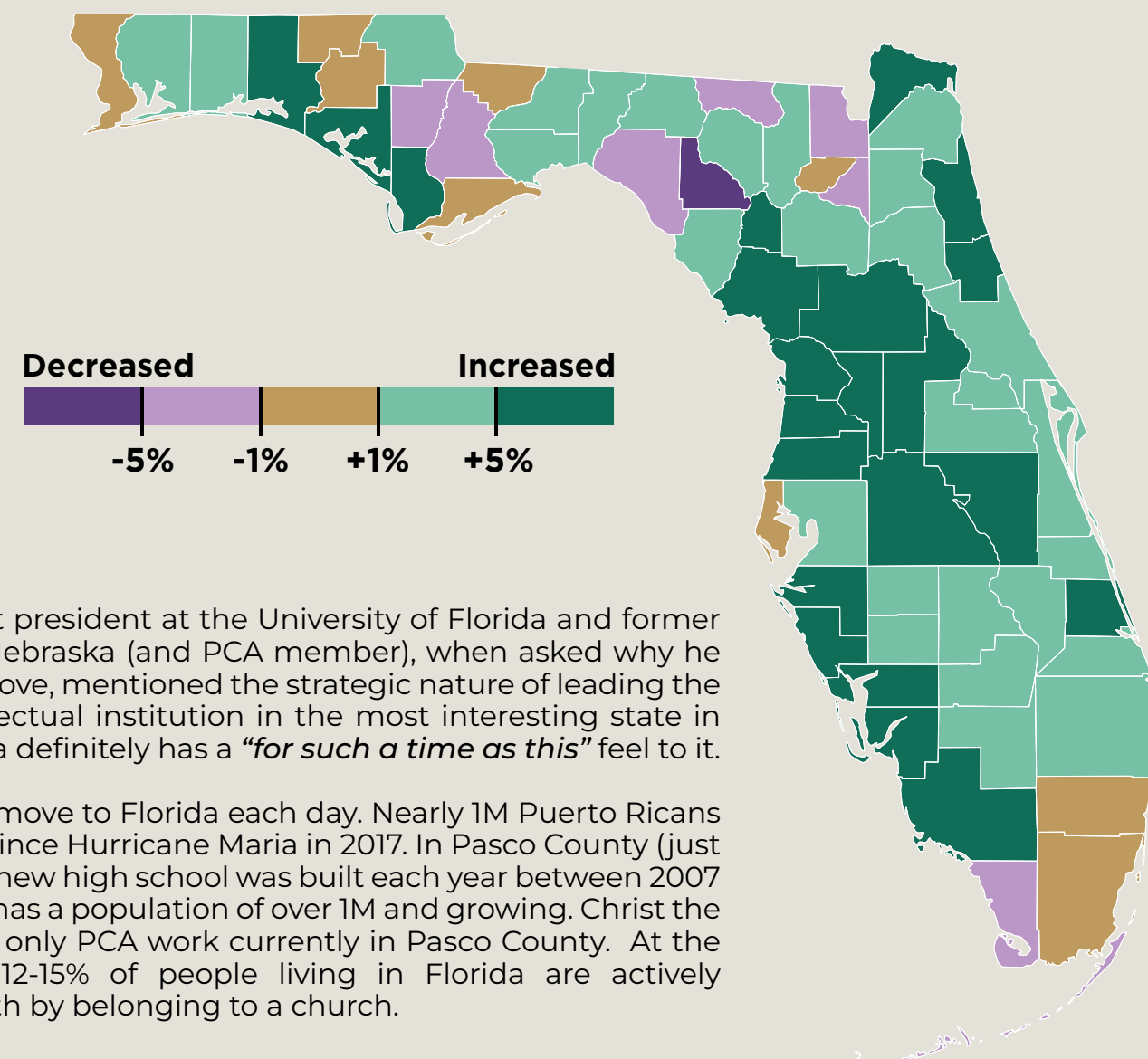
THE NEED FOR CHURCH PLANTING

More Protestant churches closed than started in 2019

Estimates based on information from 34 denominational and other groups representing 60% of U.S. Protestant churches



Change in Florida population, 2020 to 2022



Ben Sasse, current president at the University of Florida and former US Senator from Nebraska (and PCA member), when asked why he would make the move, mentioned the strategic nature of leading the pre-eminent intellectual institution in the most interesting state in the country. Florida definitely has a *“for such a time as this”* feel to it.

Over 1,000 people move to Florida each day. Nearly 1M Puerto Ricans have moved here since Hurricane Maria in 2017. In Pasco County (just north of Tampa), a new high school was built each year between 2007 and 2017 and now has a population of over 1M and growing. Christ the King Chapel is the only PCA work currently in Pasco County. At the same time, only 12-15% of people living in Florida are actively practicing their faith by belonging to a church.

A NOTE FROM OUR DIRECTOR

The Florida Church Planting Network (FCPN) is a collaborative effort of the PCA presbyteries in FL which exists to catalyze church planting. We do this by stewarding a shared vision for church planting, encouraging and advising local churches in their church planting efforts, and recruiting, assessing and developing potential church planters. FCPN is also responsible for facilitating communication and integration among the different ministry assets in Florida, such as: Reformed Theological Seminary, Reformed University Fellowship, Campus Outreach, Southland Student conferences, and the Savant-Sweet Scholarship Fund.

Our goal is to fund 4 new planting projects and 2 new apprenticeships each year. In the past twelve years, we’ve funding 33 church plants. 14 of those plants are now particularized. In the past 3-5 years, we’ve funding a Russian-speaking church plant in North Port, two Spanish-speaking church plants (in Orlando and Kissimmee), a Haitian church plant, a plant in the Villages, the largest retirement community in the country, as well as plants in beach communities and “old-Florida” small towns like Bartow. It is a beautiful, diverse, sprawling work.

Thank you for your continued support of the Florida Church Planting Network.

BOARD MEMBERS



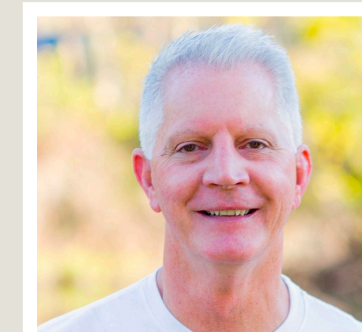
DREW BENNETT
Executive Director



TIM RICE
Chairman



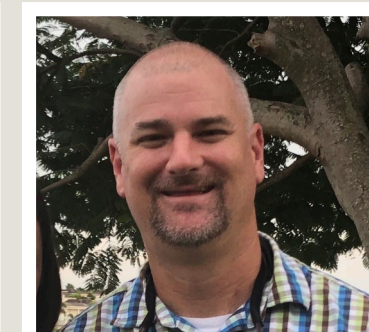
KEITH DICKERSON
Vice Chair



RICHARD COOPER
NFP MNA REP



JONATHAN CULLEY
CFP MNA REP



GEOFF HENDERSON
SCP MNA REP



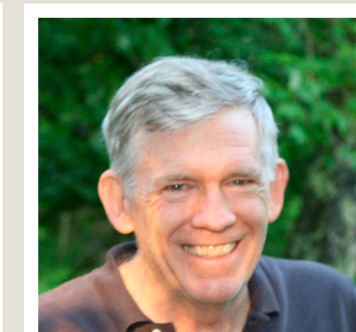
WES HOLLAND
SWFP MNA REP



LUCHRYSTA CASWELL
Parakaleo



STEVE JEANTET
SCP



ED MCDUGALL
CFP



TRAVIS STEVENS
NFP



JUSTIN WOODALL
SWFP

MEMBER CHURCHES (407K CONTRIBUTIONS)

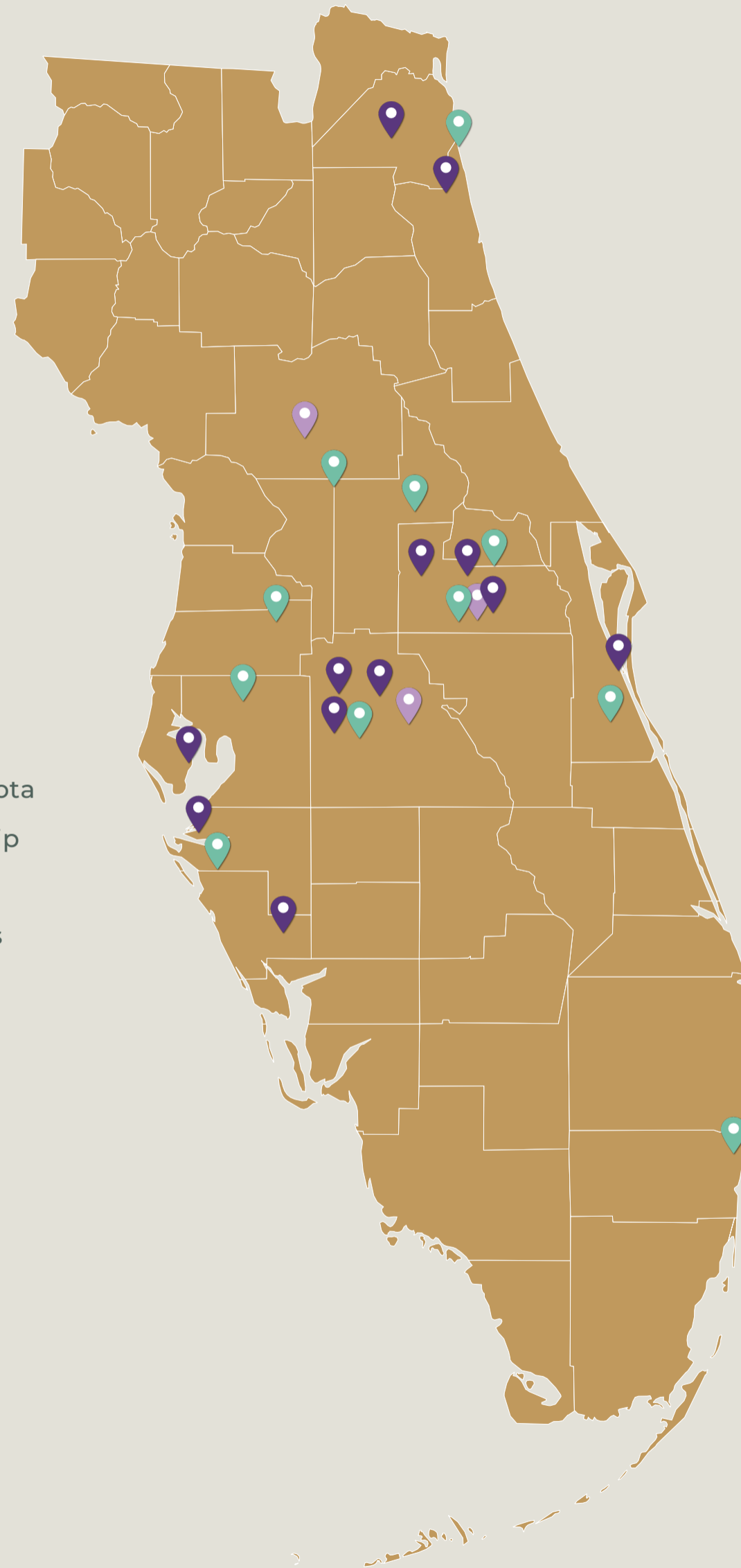
- Bay Pres.
- Christ Church East
- Christ Church Intown
- Christ Community Gainesville
- Christ Community Lakeland
- Christ Community Titusville
- Christ the King Vero Beach
- City Church St. Pete
- Coquina Ormond
- Covenant Life Sarasota
- Covenant Naples
- Covenant Oviedo
- Covenant Palm Bay
- Cross Creek
- Faith Pres. Gainesville
- Good News
- Good Shepherd Pres.
- Grace Lake Suzy
- Harbor Community Church
- Immanuel
- Lake Baldwin
- Lake Nona
- New City - Orlando
- New Hope Pres.
- Northside Melbourne
- Open Kingdom
- Orangewood
- Pine Ridge
- Pinewood Pres.
- Ponte Vedra Pres.
- Redeemer Lakeland
- Redeemer Riverview
- Redeemer Winter Haven
- River Oaks
- Seven Rivers
- Springs Pres.
- Spruce Creek
- St. Paul's Pres.
- St. Pete Pres
- Strong Tower
- Tampa Bay Pres.
- Trinity Pres. Lakeland
- University Pres. Orlando
- Westminster Brandon
- Westminster Ft Myers
- Westtown Church

MISSION CHURCHES

- Christ Church Jax Beaches
- Christ Church Sarasota
- East Collier Church
- Kissimmee Fellowship
- La Vina
- New City Palm Bay
- Oak City Church Bartow
- Seven Rivers Villages
- University Presbyterian Tampa

PARTICULARIZED

- Christ Church Intown | Jacksonville
- Harbor Community Church | Bradenton
- Strong Tower Church | Lakeland
- Open Kingdom Church | Melbourne
- Lake Nona Presbyterian Church | Lake Nona
- Christ United Fellowship | Orlando
- City Church | St. Pete
- Greater Hope Church | Mulberry
- El Shaddai Community Church | Winter Haven
- St. John's Presbyterian Church | Winter Garden



2023 ADDITIONS

MISSION CHURCHES

- Christ the King Chapel | Pasco
- Lakeside Covenant Church | Mt. Dora
- New River Fellowship | Ft. Lauderdale

PARTICULARIZED

- Covenant of Grace North Port
- Waypoint Church Nocatee

APPRENTICES

- Tony Elswick | Redeemer Winter Haven
- Josh Gilman | Good Shepherd Ocala
- Matt Matulia | New Hope Eustis
- Angel Roman | Lake Nona Presbyterian Church

PARAKALEO FLORIDA

5 leaders

LAKELAND, ORLANDO
ST. PETE & WINTER HAVEN



8

LEADERS BEING TRAINED
IN OUR LEADERSHIP VIRTUAL GROUP
WHICH SUPPORTS **TENNESSEE, COLORADO,
LOUISIANA, AND FLORIDA**

30

WOMEN PARTICIPATING
IN **5 LOCAL GROUPS**

AN ADDITIONAL

13

WOMEN PARTICIPATING
IN **3 VIRTUAL GROUPS**



2

WOMEN RECEIVED
ONE-ON-ONE CARE

25

WOMEN TRAINED
AT OUR GOSPEL LENS
FOR LIFE RETREAT

LOOKING AHEAD

As we turn our gaze towards 2024 (and beyond), most of our energy and focus will be directed towards developing leadership pipelines for future church planters and church leaders. Jonathan Haidt recently wrote an article in the Wall Street Journal entitled "The National Crisis of Gen Z". The tagline of the article was, "Warped by social media and a victimhood culture, today's young people will imperil American culture and capitalism." Also, recently, an article appeared in Entrepreneur magazine with the title "Nobody Wants to Manage Anymore." Our Seminaries are seeing the same dynamic among those preparing for vocational ministry.

We intend to attempt to counter this trend by:

- Prioritizing presbytery and church health.
- Maximizing the structures already in place - the men already under care of presbytery, pastoral interns, youth pastors, RUF campus pastors, staff and interns, etc. - and engage the list of contacts towards considering church planting in the future.
- Creating clear pathways for developing leaders through pastoral residencies, scholarships for seminary education
- Starting early with our college and even high school students.
- Including training and support for wives and women in our plans.

Still, in 2024, we expect to initiate funding on as many as 6 new church plants. This will present a welcome, but challenging, reality.

Churches from both Gulf Stream and South Florida Presbytery have signaled a desire to formally join the Network, which would unify the efforts of PCA churches in the majority of the state towards a common mission and vision. That is very exciting.

These are just a few of the highlights. Please pray for and continue to give generously to the work of church planting in Florida.

"May God be gracious to us and bless us and make his face to shine upon us, that your way may be known on earth, your saving power among all nations."

(Psalm 67:1-2)





CONTACT US

Florida Church Planting Network
26911 South Bay Drive
Bonita Springs, FL 34134

flchurchplanting.org
info@flchurchplanting.org

FACEBOOK

facebook.com/flchurchplanting

NEWSLETTER

flchurchplanting.org/sign-up

